



Shibata Ayame News

No.243 2023. Dec

Facebook
Shibata Topics
for Foreign Residents



Published by Shimin Machizukuri Shien Division
Shibata City Hall

December 4th to December 10th is Human rights week

On December 10th 1948, the United Nations Assembly adopted the Universal Declaration of Human Rights. December 10th the date of adoption, is designated as Human Rights Day. In Japan, the week ending on Human Rights Day is designated as Human Rights Week. (December 4th to December 10th)

Various activities are held throughout the country to promote awareness and encourage people to think about human rights on Human Rights Week.

Why don't you take this Human Rights Week as an opportunity to think about human rights?

第75回 **人権週間** 12月4日～10日 12月10日は人権デー

「誰か」のことじゃない。

人権啓発動画を法務省ホームページにて公開中！

法務局では、人権侵害による被害を受けた方を救済するための活動を行っています。

みんなの人権110番

0570-003-110 (LINEじんけん相談 @snsjinkensoudan)

0120-007-110 (全国無料)

0570-070-810 (法務局専用)

0570-090-911 (法務局専用)

https://www.jinken.go.jp/

法務省人権擁護局・全国人権擁護委員連合会

January Events

The 20th Castle Town Shibata National "Zoni" Battle is being held !



When: Sunday, January 14, 2024 10 a.m. ~ 3 p.m. (tentative)

Place: Shibata City Hall and Main Street Shopping Street

Content: Delicious zoni from all over the country will be sold. The "winner" will be decided by voting.

※What is "Zoni"?

It is a dish made by simmering rice cakes in a soup made with chicken and vegetables. In Japan, it is mainly eaten on New Year's Day.



You have to cooperate for clearing the snow and frozen road.

●To pay attention of something when it was snowing.

When it was snowing, snow plow truck of Shibata city clears the snow.

Pay attention for the following.

[Keep away from the snow plow trucks.]

- The snow plow truck is very big, so it has many dead angles.
The operator may not notice the people or car around,
so keep away from the snow plow truck.



[No parking at the streets]

- The parked vehicle delays the snow plow truck in clearing the snow, and the parked vehicle disturbs the emergency vehicle passes over.

[Do not throw away the snow to water channel or river.]

- The snow may cause the water channel or river to overflow.
Someone may fall into the water channel from the opened lid.

●Be careful not to break the water pipes

During cold season, water pipes freeze and may cause to break, so please be careful of the following.

[To prevent water pipes from freezing]

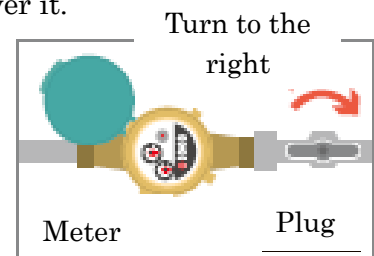
- Attach a tube to keep water pipes warm.
- If you do not use water for a long time, close the tap inside the meter box.
- ※Meter box...A box that contains a machine that measures the amount of water used.

[If the water pipes freeze]

- If the water pipes freeze
- Wrap a towel over the faucet and water pipe and pour hot water over it.
※If you pour hot water directly on it, it will break.

[If the water pipe breaks]

- ① Close the tap inside the meter box.
- ② Ask a plumbing company to repair it. If you live in an apartment,
please contact your real estate agent or landlord.



Snow information in Niigata Prefecture" is useful

We will update the snow information at 10 am and 4 pm. Please use it when you go outside,
such as snow removal work, commuting to work, or school.



snow information ↑

Let's take measures against infectious diseases!

In Shibata City, the number of people infected with seasonal flu is increasing rapidly.

In order to avoid infection, it is important to always take precautions.

Let's go back to the basics of infection prevention and take proper precautions.



Frequent hand
washing / gargling



Thorough cough etiquette
and wearing a mask in
crowded places



Frequent
ventilation



Balanced diet and
frequent hydration

Information

At night and on holiday, please use the Shibata District Emergency Clinic and the Holiday Emergency Dental Clinic.



Place: Shibata-City, Hon-cho 1-16-14 Phone:0254-23-8350

Guideline for consultation: Sudden fever, stomach pain, feeling unwell, etc.

※May not be suitable for children. Please be sure to consult by phone before coming.

Please: Health insurance certificate, medical care recipient certificate, medicine notebook.

Clinical department Consultation day / Reception hours

Clinical	Consultation day	Reception hours
Internal Medicine Pediatrics	Weekday night	① 7:30p.m~9:30p.m
	Saturday night	② 6:30p.m~9:00p.m
	Sunday・Holiday 12/31/2023~1/3/2024	③ 9:00a.m~11:30a.m/1:30p.m~4:30p.m 6:30p.m~9:00p.m
Surgery	Sunday ※1/1/2023~1/3/2024 is closed	④ 9:00a.m~11:30a.m/1:30p.m~4:30p.m
Dentistry	Sunday・Holiday 12/31/2023~1/3/2024	

Multilingual Living Consultation Center in Niigata

Do you have any trouble?

There is a contact point where people of foreign can discuss their difficulties.

Foreign languages are available



Name	Tel	Address	How to consult
Shibata City Hall Citizen Town Development Support Division	0254-28-9640	Shibata City Hall 6F, Chuocho3-3-3, Shibatashi	phone,email, machizukuri@city.shibata.lg.jp
FRCN Consultation Center for Foreign Residents	025-241-1881	Bandaijima building F2, 5-1, Bandaijima, Chuoku, Niigatashi	phone, phone,email, or zoom. nial0@niigata-ia.or.jp URL: https://www.niigata-ia.or.jp/
Yoriso Hot line	0120-279-338 (If the instructions are correct, please choose 2)		phone, URL: https://www.since2011.net/yoriso/
Niigata help no kai	025-228-2212 080-6596-0168		phone

Notification

Regarding city hall end of the year holidays:

Shibata City Hall will be closed from December 29th (Fri.) 2023 to January 3rd (Wed.) 2024.

The counter at City Hall is always crowded around the year-end and New Year holidays.

Please come to the counter at City hall with plenty of time to spare.



Shibata Japanese Class

Shibata Japanese class helps foreign people who want to learn Japanese. You can join anytime.

For more information and inquiry: Noriko Takahashi Tel (0254-22-6441)



Class	Wednesday Daytime	Thursday Daytime	Thursday Night	J school	
For	Adults	Adults	Adults	Elementary and Junior high school students	
Day	Wednesday	Thursday	Thursday	Saturday	
Time	10:00a.m. ~11:30a.m.	10:00a.m. ~11:30a.m.	19:00p.m. ~20:30p.m.	13:30p.m. ~15:00p.m.	
Place	Shimin Bunkakaikan Koudo	Shogai Gakushu Center Kensyushitsu 2	Kenko chojyu akutibu kouryu center Okunai hiroba	Kenko chojyu akutibu kouryu center	
Address	4-11-7 Chuo-cho, Shibata City	5-8-7 Chuo-cho, Shibata City	3-13-2 Chuo-cho, Shibata City	3-13-2 Chuo-cho, Shibata City	
Fee	¥ 2,000/ 1 st term: April~July ※Fees for textbook is not included.	¥ 2,000/ 1 st term: April~July ※Fees for textbook is not included.	¥ 2,000/ 1 st term: April~July ※Fees for textbook is not included.	¥ 1,000/month	
	Dec.	6, 13, 20	7, 14, 21	7, 14, 21	2, 9, 16
	Jan.	10, 17, 24, 31	11, 18, 25	11, 18, 25	13, 20, 27
	Feb.	7, 14, 21, 28	8, 15	8, 15	3, 10, 17, 24
	Mar.	6, 13	7, 14	7, 14	2, 9, 16

Shibata Ayame News is mailed to those who wish to receive it. If you would like us to send you, please contact Shimin Machitsukuri Shien Division- Shibata City Hall. If you want to see the previous issues, please see the city homepage

Contact : Shimin Machitsukuri Shien Division- Shibata City Hall Tel : 0254-28-9640

Address : 〒957-8686 Shibatashi cyuuoucyou 3-3-3 Email : machizukuri@city.shibata.lg.jp